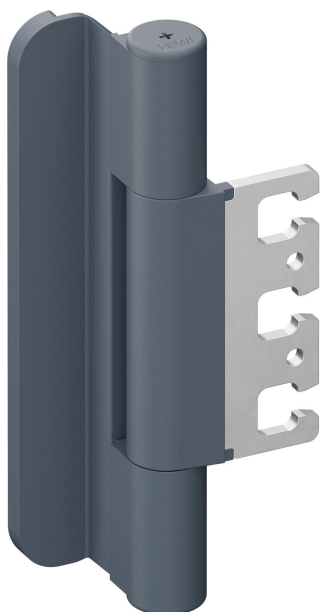


Karta produktowa
Tripple-roll hinge B8107B.160FS

HEWI



Tripple-roll hinge B8107B.160FS

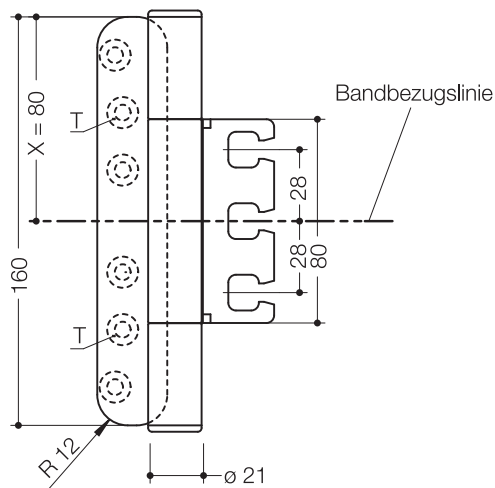
for rebated doors with weight up to 180 kg.
Built-in door panel by milling and for recessed mounting on wood, steel and aluminium doorframe in the three-dimensionally adjustable retention element VX... and VZX...

Made of solid coloured high-quality matt polyamide with steel support made of galvanised 4 mm sheet steel and closed hinge roll, 160 mm height, hinge roll diameter 21 mm, twist-proof stainless steel pin and maintenance-free polyamide plain bearings. Matt polyamide caps for covering the cut recess and the screw fixing. Can be used on right- and left-hung doors.

Four steel bushings prevent the stainless steel pin from slipping through in case of fire and therefore lowering the door. CE marking according to Construction Products Regulation No. 305 / 2011.



Wymiary w mm

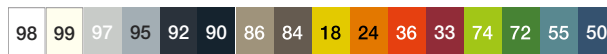


Kolory



Poliamid, matowa

Kolory alternatywne



Poliamid

Zastrzega się możliwość wprowadzania zmian technicznych, 30.08.2019

HEWI Heinrich Wilke GmbH
Postfach 1260
D-34442 Bad Arolsen

Telefon: +49 5691 82-366
Telefax: +49 5691 82-99366
international@hewi.com
www.hewi.com

HEWI Heinrich Wilke GmbH
Sp. z o.o. Oddział w Polsce
Ul. Lelka 26
02-812 Warszawa

tel. +48 22 330 00 51
fax +48 22 330 00 50
info@hewi.pl
www.hewi.com