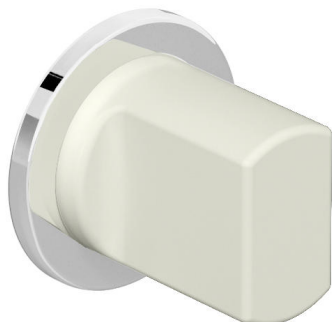


**Karta produktowa**  
**Rozeta WC 306PBXCMNR**

# HEWI

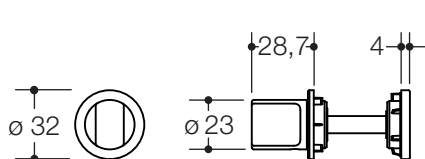


### Rozeta WC 306PBXCMNR

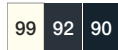
made of polished stainless steel (1.4301), diameter 32 mm, bolt made of matt polyamide, execution with emergency opening by means of coin (made of stainless steel (1.4301) polished) and optionally with or without occupancy disc (red/green indicator) on the outside.



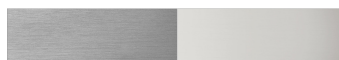
#### Wymiary w mm



Poliamid, matowa



Rozety stal szlachetna (matowa lub z polyskiem)



Stal szlachetna

Zastrzega się możliwość wprowadzania zmian technicznych, 21.08.2019

HEWI Heinrich Wilke GmbH  
Postfach 1260  
D-34442 Bad Arolsen

Telefon: +49 5691 82-366  
Telefax: +49 5691 82-99366  
international@hewi.com  
www.hewi.com

HEWI Heinrich Wilke GmbH  
Sp. z o.o. Oddział w Polsce  
Ul. Lelka 26  
02-812 Warszawa

tel. +48 22 330 00 51  
fax +48 22 330 00 50  
info@hewi.pl  
www.hewi.com