

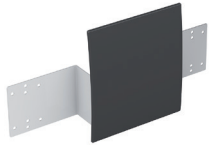
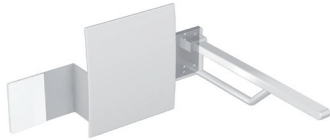
Ordering aid | Backrest rail with stationary hinged support rails 950

BACKREST RAIL

STATIONARY HINGED SUPPORT RAILS

NECESSARY FOR ALL

Polyamide



950.51.90090

- c to c 650-700 mm adjustable on site
- 150 mm deep
- backrest made of glass fibre reinforced polyamide in HEWI colours 98 (signal white) and 92 (anthracite grey)
- mounting bar made of metal, powder coated

Polyamide



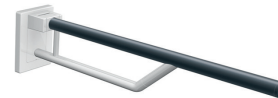
950.50.11090 | 600 mm



950.50.12090 | 700 mm
950.50.13090 | 850 mm



950.50.11091 | 600 mm
950.50.11099 | 600 mm



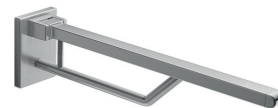
950.50.12091 | 700 mm
950.50.12099 | 700 mm
950.50.13091 | 850 mm
950.50.13099 | 850 mm



Stainless steel



950.50.610XA | 600 mm



950.50.620XA | 700 mm
950.50.630XA | 850 mm



WARM TOUCH



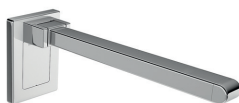
950.50.11050 | 600 mm



950.50.12050 | 700 mm
950.50.13050 | 850 mm



Chrome



950.50.61040 | 600 mm



950.50.62040 | 700 mm
950.50.63040 | 850 mm



BM17.4

For fixing on walls made of concrete (> C20/C25)
National technical approval number: ETA-11/0493

additionally:
injection mortar (HEWI item No.: 200311)
or to be provided on site:
injection mortar HIT-HY200A (Hilti)
extrusion tool HDM (Hilti)

BM10.4

For fixing on walls made of concrete (> C20/C25)

BM11.4

For fixing on walls made of autoclaved aerated concrete (> P2)

additionally:
injection mortar (HEWI item No.: 200266), conical drill bit (HEWI item No.: 171041)
or to be provided on site:
injection mortar HIT-HY 270 (Hilti)
extrusion tool HDM (Hilti)
conical drill bit TE-C PB 22/100 (Hilti)

BM12.4

For fixing on lightweight walls with rear lining made of laminated timber boards (with waterproof bonding, at least 30 mm thick required, e.g. studs or prewall installation)

BM13.4

For fixing on lightweight walls with integrated steel plates (e.g. studs or pre wall installation)

BM18.4

For fixing on walls with mesh sleeve \varnothing 18 mm

- hollow concrete block
- vertically perforated bricks
- hollow lightw. concrete block
- lightweight aggregate concrete with open structure

National technical approval number: ETA-13/1036

Without mesh sleeve

- hollow concrete block, vertically perforated bricks

National technical approval number: ETA-13/1036

additionally:
injection mortar (HEWI item No.: 200266) or to be provided on site:
injection mortar HIT-HY 270 (Hilti)
extrusion tool HDM (Hilti)