

Fixing material BM12.2

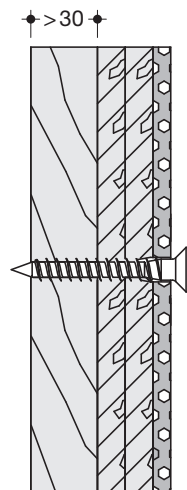
- for Range 801 / 805 Classic stationary support and hinged supports rails
- for Range 801 / 805 Classic shower spray guards
- for hinged seats 950...

For installation on lightweight walls you will need a rear lining, e.g. laminated timber boards, with waterproof bonding, min. 30 mm thickness required, for example, Support stand or wall installation)

Consisting of:

- 2 stainless steel screws diameter 10 x 95 mm

Dimensions in mm



Technical information subject to alteration, 13th November 2019

HEWI Heinrich Wilke GmbH
Postfach 1260
D-34442 Bad Arolsen

Telefon: +49 5691 82-366
Telefax: +49 5691 82-99366
international@hewi.com
www.hewi.com

HEWI (UK) Limited
Holm Oak Barn, Beluncle Halt
Stoke Road
Hoo Kent ME3 9NT

Phone +44 1634 258 200
Fax +44 1634 250 099
info@hewi.co.uk
www.hewi.com