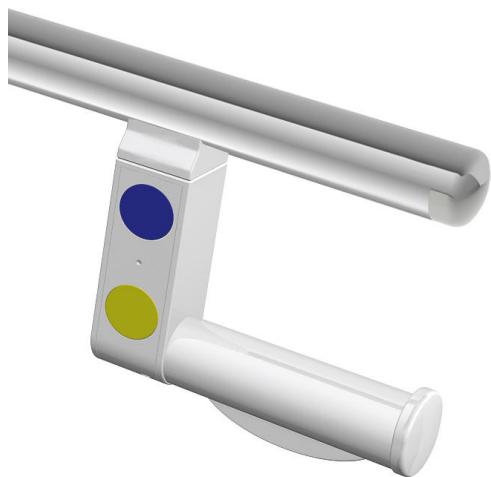


Product data sheet

Upgrade kit toilet roll holder, function button and WC flushing mechanism (radio-controlled) 950.50.06390

HEWI

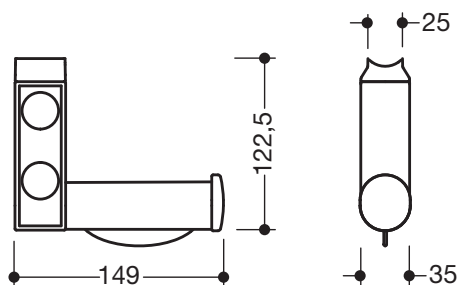


Upgrade kit toilet roll holder, function button and WC flushing mechanism (radio-controlled) 950.50.06390

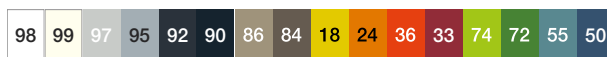
- right angle-shaped toilet roll holder with WC flushing mechanism and function button (radio controlled)
- blue button for releasing the flushing mechanism, yellow button for triggering a freely definable function (The function button does not meet the requirements for an emergency call according to DIN VDE 0834-1)
- left-hand version
- for retrofitting on hinged support rails 950.50.1... and stationary support rails 950.50.3...
- easy installation
- integrated toilet roll brake
- 35 mm wide, 122.5 mm high, 149 mm deep
- made of high-quality polyamide according to HEWI colour chart
- transmission frequency 868.4 MHz
- suitable for radio-controlled WC flushing systems made by Geberit, Friatec, Mepa, Sanit, Viega, TECE and Grohe



Dimensions in mm



Colours



Technical information subject to alteration, 16th August 2019

HEWI Heinrich Wilke GmbH
Postfach 1260
D-34442 Bad Arolsen

Telefon: +49 5691 82-366
Telefax: +49 5691 82-99366
international@hewi.com
www.hewi.com

HEWI (UK) Limited
Holm Oak Barn, Beluncle Halt
Stoke Road
Hoo Kent ME3 9NT

Phone +44 1634 258 200
Fax +44 1634 250 099
info@hewi.co.uk
www.hewi.com