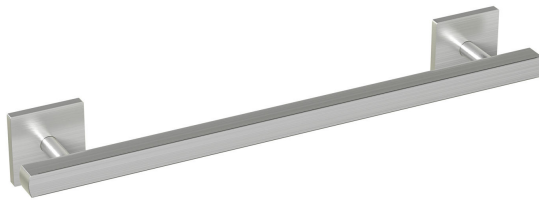


**Product data sheet**  
**Support rail 950.36.610XA**

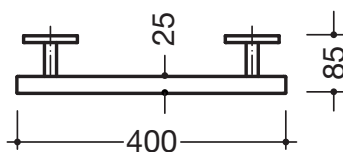
# HEWI



### Support rail 950.36.610XA

- straight rail with supports straight to the wall and roses
- for holding on to and providing support
- made of high-quality stainless steel, satin surface finish
- outside dimension 400 mm
- square profile 25 x 25 mm with large radii, 85 mm deep
- wall connection with discreet supports (diameter 18 mm) perpendicular to wall and flat, square roses
- roses 80 x 80 mm, 10 mm high
- easy installation due to individually mountable fixing plates made of high-quality stainless steel for hanging the support rail
- fixing with grub screw located on the underside of the rose
- suitable for HEWI hanging seat 802.51...15... and 802.51...16...
- including non-corrosive HEWI fixing material

Dimensions in mm



Surface

XA | satin

Technical information subject to alteration, 16th August 2019

HEWI Heinrich Wilke GmbH  
Postfach 1260  
D-34442 Bad Arolsen

Telefon: +49 5691 82-366  
Telefax: +49 5691 82-99366  
international@hewi.com  
www.hewi.com

HEWI (UK) Limited  
Holm Oak Barn, Beluncle Halt  
Stoke Road  
Hoo Kent ME3 9NT

Phone +44 1634 258 200  
Fax +44 1634 250 099  
info@hewi.co.uk  
www.hewi.com