

## Product data sheet

### Row washbasin with height graduation 950.12.305

# HEWI

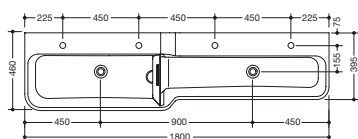
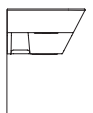
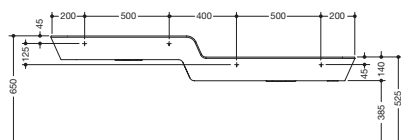


#### Row washbasin with height graduation 950.12.305

- Especially suitable for child daycare centres
- Made of mineral composite with non-porous surface, alpine white
- 2 interconnected rectangular basins with large radii
- Upper left washbasin
- Height offset 125 mm
- 1800 mm wide, 265 mm high and 460 / 395 mm deep
- The lower basin has a smaller depth
- Incl. transparent baffle made of Perspex in blue, suitable for water play (not completely sealing)
- Without overflow, incl. 2 standpipe valves for water accumulation
- wash trough depth 125 mm
- Prepared for 4 single-hole taps
- For hanger bolt fastening
- Weight capacity to EN 14688
- CE marking according to Construction Products Regulation No. 305/2011
- High water temperature (e.g. when carrying out thermal disinfection): change resistant up to 65 °C, resistant up to 80 °C over a load period of 5 minutes



#### Dimensions in mm



Mineral composite

Alpine white

Technical information subject to alteration, 8th September 2021

HEWI Heinrich Wilke GmbH  
Postfach 1260  
D-34442 Bad Arolsen

Telefon: +49 5691 82-366  
Telefax: +49 5691 82-99366  
international@hewi.com  
www.hewi.com

HEWI (UK) Limited  
Holm Oak Barn, Beluncle Halt  
Stoke Road  
Hoo Kent ME3 9NT

Phone +44 1634 258 200  
Fax +44 1634 250 099  
info@hewi.co.uk  
www.hewi.com