

Product data sheet
L-shaped support rail 900.22.303XA

HEWI



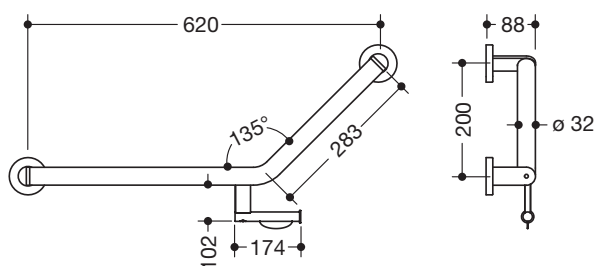
L-shaped support rail 900.22.303XA

- rails joined at a flat angle with mounting roses
- left-hand version
- fixing spacings 620 mm and 283 mm, 135° angle, 88 mm deep
- rail diameter 32 mm, tube thickness 2 mm, rose diameter 70 mm
- made of high-quality stainless steel, satin
- including non-corrosive and tested HEWI fixing material for wall mounting and sealing tape for sealing the drilling points



Similar picture

Dimensions in mm



Surface

XA

Alternative surfaces

Chr

DX

DC

AY

SC

Technical information subject to alteration, 16th August 2019

HEWI Heinrich Wilke GmbH
Postfach 1260
D-34442 Bad Arolsen

Telefon: +49 5691 82-366
Telefax: +49 5691 82-99366
international@hewi.com
www.hewi.com

HEWI (UK) Limited
Holm Oak Barn, Beluncle Halt
Stoke Road
Hoo Kent ME3 9NT

Phone +44 1634 258 200
Fax +44 1634 250 099
info@hewi.co.uk
www.hewi.com